

PIPECUT 280E



- Capacity 1.600 to 11.200" O.D.
- Plastic pipe 1.500" thick and steel pipe 0.400" thick
- 2-speed motor (2900 and 3900 RPM)
- Complete with pipe rollers, carry bag and 165 mm TCT Blade

Order # 280E

SUPERTRONIC 1250



- Portable and compact
- Comes with 0.500 to 1.250" heads
- Includes pipe clamp & carrying case
- 34 RPM

Order # 88521300

T-Drill HFT

T-DRILL COMMERCIAL

- Less than 300 tees pays for your drill
- Capacity 0.500 to 2" O.D. on 4" copper
- Battery operation or 110 VAC
- Only 1 brazed joint
- Comes complete with Notcher Dimpler



Order # T-65 or # T-65B



- Produce 20 x 1.000" outlets in less than 10 minutes
- Use with your existing T-Drill
- Easy and precise positioning
- Eliminate Tee inventories

Order # HFT-2000

ROPOWER 50R



- 0.500 to 2.000" capacity pipe threader
- auto-open
- auto-oil die head
- 2 sets of ball detent dies, cutter and reamer
- Wheeled stand extra

Order # 63005

T-DRILL TEC-150

- Cold forming of stainless steel, steel, copper, aluminum, copper nickel
- Branch sizes 0.500 to 8.000" pipe
- Main run sizes 1.000 to 20.000" pipe
- Collaring time 2-1/2 to 7 minutes
- Eliminates tee fittings
- Save 2 joints of labour



Order # TEC-150

END FORMING

- Capacity 0.500 to 8.000"
- 1 – 2 – 3 head machines available
- Ram or segmented industry standard tooling
- Expand
- Reduce
- Slot
- Pierce



Order # EL-VF

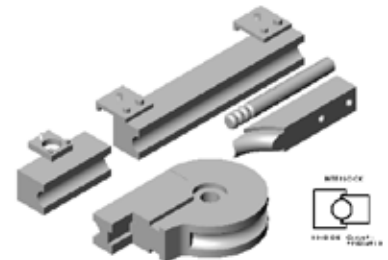
BENDING

- 3.000" capacity
- All electric – reduces set-up time
- Drop away clamp with programmable force
- Other models from 0.125 to 6.000" available



Order # EL-VB90

BEND TOOLING



- Wiper dies - re-cuts - tips
- Mandrels in AB and CHROME
- Bend – clamp – pressure dies
- Empty Bend Tooling®

Order # Tools For Bending

ROFROST CO₂



- Self-contained
- CO2 collar freeze kit
- Capacity 2.125" O.D. copper and 2.375" O.D. steel

Order # 63005

NORDIC FREEZE

- Capacities to 6.000"
- Liquid CO₂
- Manufactured in Canada
- Starting at \$395

Order # 1001



ROFROST TURBO



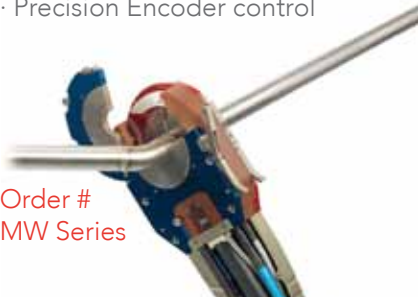
- Freeze collars for 14 sizes are included
- Capacity to 2.375" O.D.
- No clamps needed
- Includes thermos-sensors
- CFC free – closed system 110 VAC

Order # RO-062205-6-8

MW WELD HEAD

- Oxidization free welds
- Flexible titanium TCI's
- Automatic homing – water cooling
- Precision Encoder control

Order #
MW Series



P4 POWER SUPPLY



- Touchscreen interface
- High QC Trace-ability
- WPS Print out
- 110 or 220 VAC auto sense power
- Intuitive programming

Order # P4

MUIV WELD HEAD

- Easy to use – low clearance
- Closed loop water cooled torch
- With or without AVC - OSC
- With or without on-board wire

Order #
MUIV Series



ROBEND 3000



- Capacity 0.500 to 1.125"
- (6 tool sets)
- Patented ROLUBE System
- Automatic degree shut off
- Powerful 1010W – 115 VAC motor

Order # 7647054
(1/2-3/4-1" tool sets)

ROLLING MACHINES

- 3 driving rolls
- Digital readout
- Hard stop for top roll position
- Tilting mono-bloc base

Order # DS60 HV



ERCOLINA 070

- Portable and simple to use, 110 VAC
- Capacity to 1.250" O.D.
- Carry case and foot pedal included
- Bends up to 180 degrees

Order # MAC-070



STATIONARY BEVELING



- Capacities from 0.500 to 8.000"
- Heavy duty – fast
- Floor to floor 20 seconds
- Available in air or hydraulic



Order # MSI-C8H

PLATE BEVELING

- 4 models to choose from
- 0.250 to 4.000" capacities
- Carbon – stainless – duplex
- Fixed or variable angle
- Cladding removal



Order # Challenge

PORTABLE BEVELING

- Capacity 2.000 to 8.000" air or electric
- Self centering
- Optional flg facing attachment
- Other models from 0.500 to 36.000" available



Order # SuperBoiler T5

P6 POWER SUPPLY



- 4-6 axis control – auto head recognition
- Large 10.400" color touch screen
- 5 to 300A constant or pulsed
- Hot wire capability

Order # P6

TS8-75 HEAD

- Welds recessed – flush – protruding
- Pneumatic clamping standard
- Precise closed loop regulation
- Adjustable stand-off legs for every pitch



Order # TS8-75

CLADDING



- TIGer – Dual TIGer
- TIG Hot Wire – TIG Cold Wire
- 2% – 5% Dilution TIG Cladding at sub-arc speeds
- 12m length for pipe applications
- Rotating Torch, Rotating work piece, robotics, lance

Order # TIGer

COLD WHEEL CUTTING

- Capacities to 8.000" (3 models)
- Chip less process
- Fast – 6 seconds for 4.000" x S/40
- Manual or semi-automatic
- Deburring option

Order # K400
SuperCutter



COLD CUTTING

- Pneumatic, hydraulic and electric models
- 1.000 to 96.000" inch capability
- Copier toolboxes
- Cutting, bevelling, facing, counterboring
- Split Frame construction for pipeline work
- 60mm Wall Thickness

Order # GBC Clamshell



PLASMA CUTTING



- 8-axis control with touch screen
- Mitre and straight cuts
- Windows XP operating system
- ICON driven cut selection

Order # JESSE SHC

PACE 1039

- Roll grooves 1.250 to 6.000"
- Light wall and S/40
- Ratchet included for in-situ work
- Nipple bosses to mount on a Rigid®300



Order # 1039

PACE 1041

- Quickly converts Rigid®300 to a production roll groover
- Rolls included for 1.000 through 6.000" schedule 40
- Optional rolls for 8.000 to 12.000" light wall available



Order # 1041

PACE 1112

- Includes three Top and Bottom Rollers
- Grooves pipe from 1.000 to 12.000" diameter
- Easily portable for on-the-job work
- Model 1112 rotates pipe at 60 RPM



Order # 1112

PACE 2112

COLD SAW CUTTING

- Capacities to 6.000" (4 models)
- Fast – square – burr less cutting
- Cuts round or structural with ease
- Manual or semi-automatic



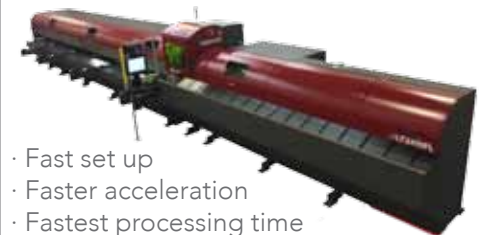
Order # VMS 350



- Automatic roll Groover 1.000 through 12.000" S/40
- Self-contained hydraulics – 15,000 PSI
- Ships complete with all rolls to cover the range
- 1-1/2 HP 110 VAC

Order # PA-2112

LASER CUTTING



- Fast set up
- Faster acceleration
- Fastest processing time
- North American made and competitively priced

Order # LT2410FL

FLYMARKER PRO



- 100% mobile and portable
- Durable, tamper-proof marking
- Fast and deep markings
- Easy to operate

Order # FM-Pro

ROCONNECT COMPACT



- Crimp force 12000 lbs
- 18V Li-Ion battery
- Lightweight and compact
- Includes 3 copper jaws
- Other models available

Order # 16002

ROCKLINIZER



- Applies carbide to metals, tools and dies
- For gripping, maintenance and wear protection
- Deposits from 0.0002 to 0.007"
- Rotary applicator

Order # 850